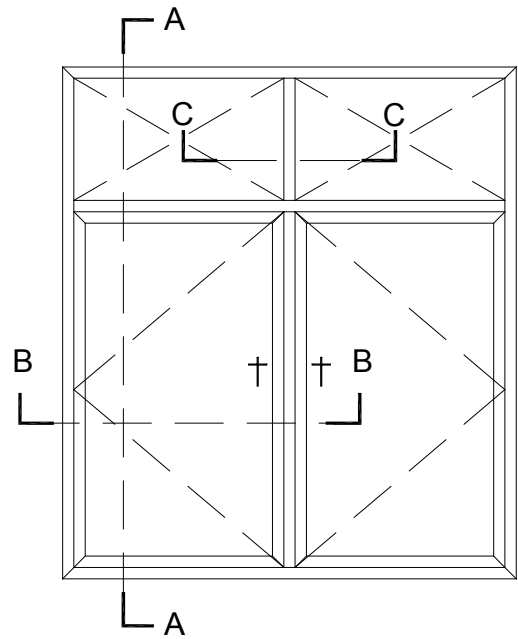
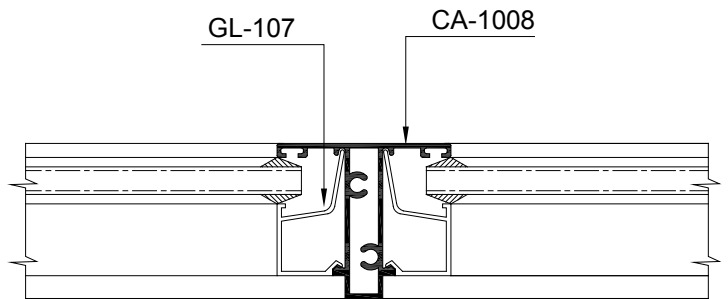


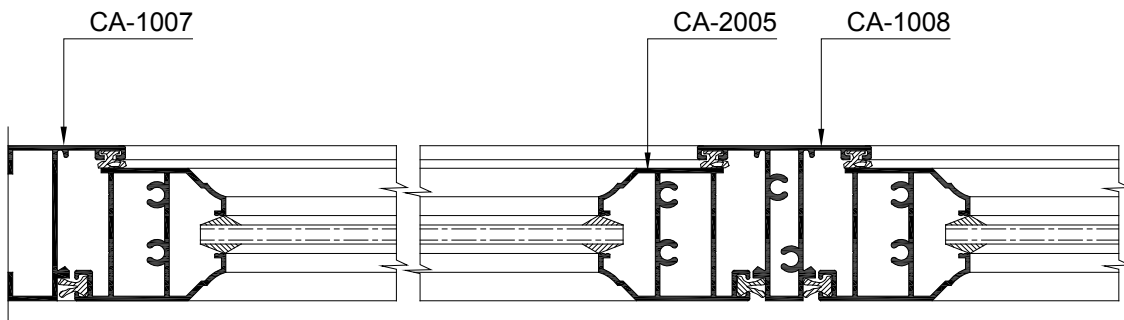
SECTION :- A-A



ELEVATION

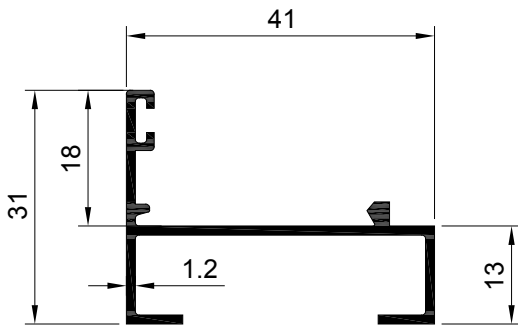


SECTION :- C-C

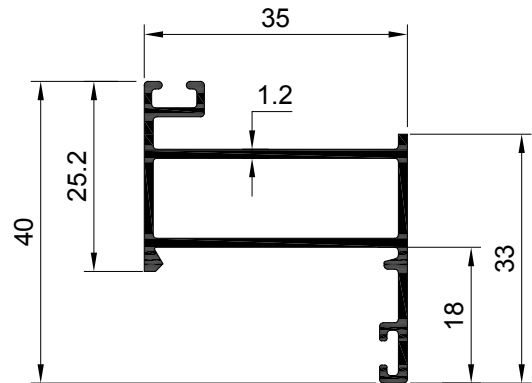


SECTION :- B-B

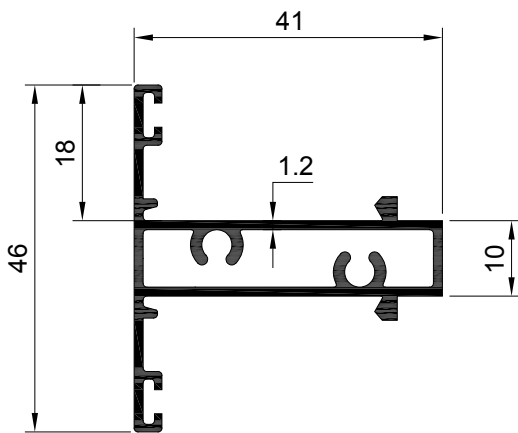
41mm Casement & Louver



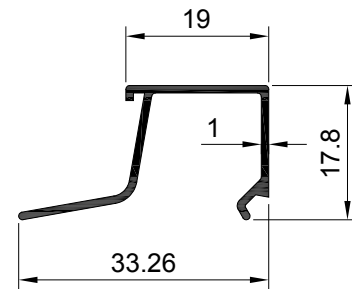
SECTION NO. - CA-1007
EST. WEIGHT - 0.358 KG./M.



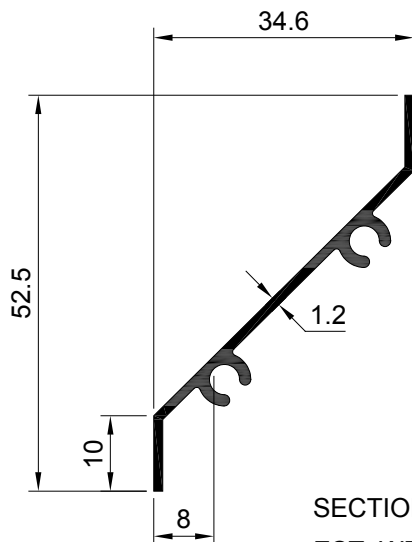
SECTION NO. - CA-2004
EST. WEIGHT - 0.472 KG./M.



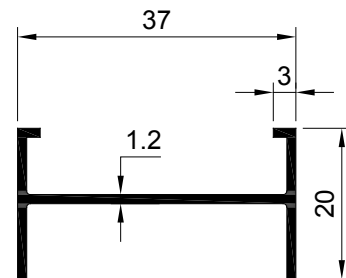
SECTION NO. - CA-1008
EST. WEIGHT - 0.612 KG./M.



SECTION NO. - GL-107
EST. WEIGHT - 0.185 KG./M.



SECTION NO. - DG-01
EST. WEIGHT - 0.298 KG./M.



SECTION NO. - DG-101
EST. WEIGHT - 0.254 KG./M.